

Workshop Report

Title of the workshop: ***“Early Identification of Children with disabilities-The Role of Paediatricians and Medical Practitioners”***

Date of the workshop: Dec 3, 2016

Place: Hotel Pai Viceroy

Details of Participants attended: 21

PHC (Primary Health Centres)		CHC(Community Health Centres)		GH(General Hospital)		Medical Colleges	Training Officer
Medical Officers of health	9	Paediatricians	6	Paediatrician	1	4	1

Resource Persons:

Dr. M.S. Mahadeviah: Presently, Honorary Professor at Kempe Gowda Institute of Medical Sciences [KIMS] in paediatrics and Honorary Medical Director, Spastics Society of Karnataka, Bangalore.

Dr. Chitra Sankar: Consultant, Developmental Paediatrics, Manipal Hospital and Founder Director- Progressive Milestones Corner

Inaugural Session: Kalaivani Raipet, Director-Training and Outreach welcomed the participants and requested the dignitaries and the Participants to view a 5 min video on FAME INDIA. Mrs.Raipet gave a brief about the other verticals of FAME INDIA and explained the significance of International Day of persons with Disabilities. The Dignitaries were invited to the diaz. Mrs. Geetha Murthy in her welcome address spoke about the significant role that Medical Practitioners and Paediatricians play in identifying children with disabilities. The Chief Guest, Dr.Madhukumar, Joint Director-Health, Education and Training, Department of Health and Family welfare services, Govt of Karnataka, in his remarks lauded the efforts and expressed his willingness to support such initiatives taken by FAME INDIA.



I session: Introduction to Developmental Paediatrics and Developmental disabilities - Dr.M.S.Mahadeviah

Key Points covered

- Introduction to ID,LD,ASD,CP, Speech and Communication disorder
- Importance of taking developmental history, Family history,
- Knowledge of Developmental milestones-Motor, speech and Language, learning, behaviour, investigations
- Physical Examination-general appearance, Ocular movements., opacities, fundal examination
- Diagnoses and counselling process



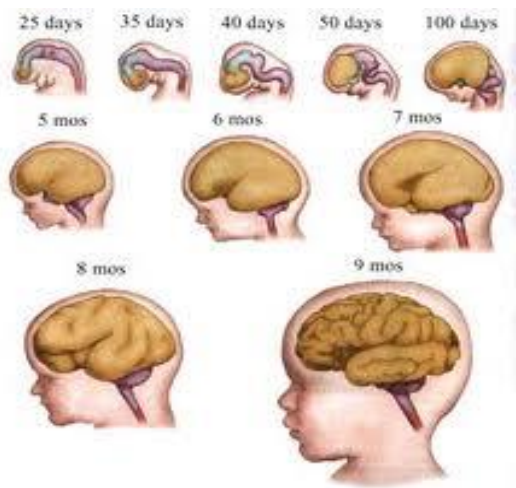
Insights gained

- ✓ Importance of early identification and the need for a regular follow up
- ✓ Examination differs in different age groups
- ✓ Consanguinity is not to be highlighted as a major cause for disability
- ✓ Investigations such as PET,MRI,CT are not needed unless indicated
- ✓ 90% of the disabilities are not progressive
- ✓ Parents are to be considered as equal partners
- ✓ Tips on how to talk to the Parents
- ✓ Paediatricians should highlight positives in the child when they write their report
- ✓ Multidisciplinary team is very important for development of children

II session: Developmental screening and assessment in office practice

Key points covered

- Early Childhood is the most important phase for over all development throughout the lifespan
- Early experiences determine health, education and economic participation for the rest of life
- Sensory pathways like those of vision and hearing are the first to develop, followed by early language skills and higher cognitive functions



- Premature babies do have disadvantages as the brain is not fully developed
- Factors affecting development-Maternal, Neonatal, Post natal and Psycho Social
- Intro on Surveillance, Screening and Evaluation-signs and symptoms of high risk infants
- Importance of screening-why, how, when and how often
- Screening tools-Developmental Observation Card(DOC), TDSC,DATA,LEST,M-CHAT

Insights gained

- ✓ Early Identification of developmental disorders and early stimulation is critical to the well being of children
- ✓ The brain's capacity for change decreases with age.
- ✓ The brain is most flexible or Plastic early in life to accommodate a wide range of environments and interactions
- ✓ Post screening surveillance was stressed

- ✓ Undernourished mother gives birth to undernourished baby perpetuating the intergenerational cycle of undernutrition
- ✓ Two important interventions for child development are 1. Early stimulation and 2. Maternal and Child Nutrition

Conclusion: The session was interactive and informative. Screening tools were discussed in detail and doubts were clarified by the experts. **It was widely felt that a chapter on Neuro developmental disabilities could be included in the curriculum for students of Medicine.**

The workshop was well received and was rated 9 on a scale of 1 to 10



Feed back

Training Session Feedback

Name: Dr. Gresha B Date: 3/12/16

Session: Introduction of developmental Paediatrics Facilitator: Dr Mahadumiah

1. I learnt the following for the first time and found them interesting-

- a) Only identification of developmental d/c
- b) with simple landmarks
- c) counselling the parents

2. I already knew the following and this session reinforced it further-

- a) Developmental d/c
- b) methods of diagnosis
- c) methods of interventions and about Autism.

3. I have the following feedback about this session:

What was done well: All important points were high lighted in a short time

What can be improved and how: - Case scenarios for better understanding

Training Session Feedback

Name: Dr. Bhargava Date: 3/12/16

Session: II Facilitator: Chitra Shankar

1. I learnt the following for the first time and found them interesting:-

- a) Tools to diagnose M/Chart
- b) Different types of charts screening
- c) Detailed evaluation of children

2. I already knew the following and this session reinforced it further:-

- a) Milestones

3. I have the following feedback about this session:

What was done well: should share information more public that this type of tools available to find out problems

What can be improved and how: -